

Company Profile



ASAN PRECISION CO.,LTD.

1. Company History

Oct. 1986 Company was established at Mullae District, Seoul, Korea

Jul. 1988 Company was expanded and moved to Anyang City, Gyunggi-do, Korea

Nov.1991 Factory was constructed at Gunpo City, Gyunggi-do, Korea and company was moved to the same place

Jan.2003 Acquired the ISO9001/2000 quality certificate

Jan. 2004 Acquired the QS9000 quality certificate

Jul. 2004 Factory was constructed at Euiwang City, Gyunggi-do, Korea and company was moved to the same place

Sep. 2005 Acquired the SQ mark from Hyundai Motors Co.,Ltd. and Kia Motors Co.,Ltd.

Dec. 2008 R&D Institute was established

Feb. 2009 Designated as small/medium enterprise with technical innovation by the Small&Medium Business Administration

Feb. 2009 Designated as a venture enterprise by KIBO

Jul. 2010 Company was expanded and moved to Hwaseong-si, Gyunggi-do, Korea



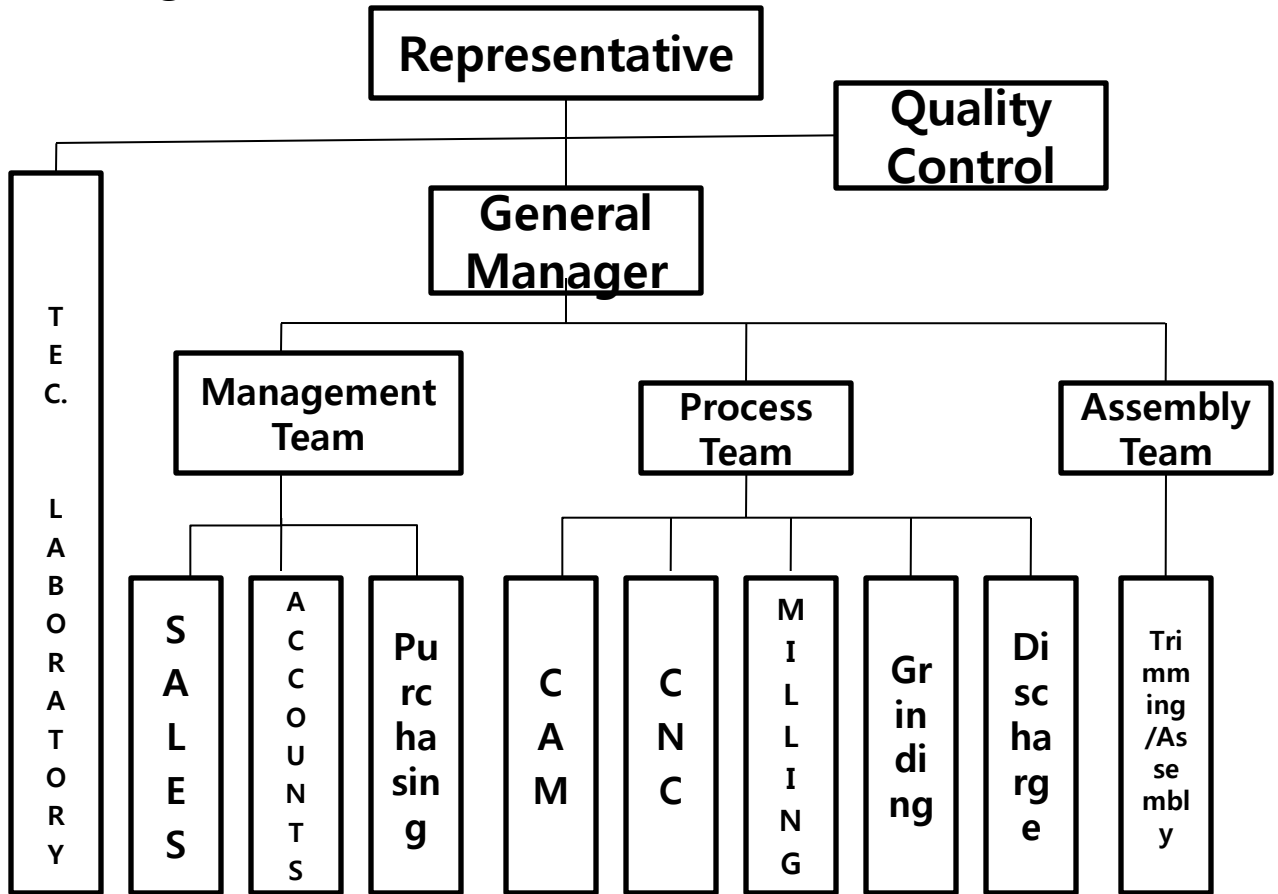
2. General of Company

Company Name	A-san Precision		Representative	Eom,Dae Ho/ Yoou,Wan Ho
Contact Phone	031-355-9084~6		FAX	031-355-6859
E-mail	asan4588@chol.com		Capital	3925 Million KW
Web Site	http://www.asan21.co.kr		Employees	35
Business License No.	123-28-79352		Foundation Date	Oct.10.1986
Location	701-18 Yangno-ri, Bibong-myeon, Hwaseong-si, Gyeonggi-do, South Korea			
Ground Capa	Ground 980pyeong, Building 400pyeong		Possession	Own
Production Item	Plastic & Die casting Molds		Portion of Automobile : 95%	
Production CAPA	Maxium 1,300Ton Injection M/C : 10~15set/Month		Maxium Mold Weight : Below 10 ton	
Main Production ITEM	PLASTIC Parts	DR O/SIDE-HDL, CONSOLE, DR TRIM ,ROOF, HOOD		
	D/CAST Parts	CYL' HEAD COVER, OIL PAN, PISTON, PINION HSG		
Main Customers	Injection Molds	SEUNGWON IND. CO.,LTD.JAEYOUNG Wellix Co.,Ltd., PLAKOR CO.,LTD.		
	D/CAST Molds	INZI AMT CO.,LTD., Dong Yang Piston Co.,Ltd. SONA KOYO IN INDIA, KIRAN IN INDIA		
Portion of Sales Volume	Kinds of Molds	PLASTIC INJECTION MOLDS : 70%, DIE CASTING MOLDS : 30%		
	Customer	Hyundai, Kia Motors:60%, GM Daewoo:10%, export:20%, others:10%		



3. Organization

1) Diagram



2) Personnel Setup

Division	Affairs	Nos.	Division	Affairs	Nos.
Technologies Laboratory	Chief of Lab.	1(double)	Process Team	Milling	3
	Design	5		Grinding	1
Management Team	Sales	2		Discharge	1
	Account	1	Assembly Team	Trim / Assembly	13
	Purchasing	1		Quality Control	Inspection/Measure
Process Team	CAM	1	Total		34
	CNC	5			



4.List of Manufacturing Equipments

Name	Dimension	Manufacturer	Q'ty	Remark's
CNC MILLING M/C	NVD 5000(5号)	MORISEIKI(Japan)	2	(Rpm 20,000)
CNC MILLING ECOMIL	SIRIUS 65VH(6号)	Hwacheon (Korea)	1	
CNC MILLING ECOMIL	SIRIUS 85VH(8号)	Hwacheon (Korea)	1	
CNC MILLING M/C	SIRIUS 1250(12号)	Hwacheon (Korea)	1	
CNC MILLING M/C	VM 510	Doosan (Korea)	1	
CNC MILLING M/C	DNM 650	Doosan (Korea)	1	
NC EDM M/C	500NC	Daehan (Korea)	1	
NC EDM M/C	700NC	Daehan (Korea)	1	
NC EDM M/C	AG100L	Sodic (Japan)	1	
FORM GRINDING M/C	250*500	Kumho (Korea)	1	DIGITAL 1/1000
FORM GRINDING M/C	180*450	Kumho (Korea)	1	DIGITAL 1/1000
MILLING M/C	300*800	Hwacheon (Korea)	2	DIGITAL 5/1000
MILLING M/C	300*800	Hwacheon (Korea)	1	DIGITAL 5/1000
Radial Drill M/C	DPD-1100	Doosan (Korea)	1	
LATHE	1800	Hwacheon (Korea)	1	
CRANE	3T, 5T,5T,10T	Pyungsun,Bando	4	
Die Spotting Press	200 Ton	ASAI (Japan)	1	
3D MEASURING INSTRUMENT	C776	MITUTOYO	1	
2D CAD S/W	AUTO CAD 2005~2009	INTERGRAPH	6	6 COPY
3D CAD.CAM S/W	NX4~NX8 POWER MILL	SIMENS	5	5 COPY
CAM S/W	V8.0~V10.0	DELL CAM	4	4 COPY
CAE S/W	V1.0	Anecasting	1	1 COPY



5.List of Measuring Equipment

Name	Dimension	Q'ty	Manufacturer	Remarks
BLOCK GAUGE	76PIECE	1SET	MITUTOYO	Class 'A'
BLOCK GAUGE	103PIECE	2SET	MITUTOYO	Class 'A'
2D PROJECTOR	100*100	1 SET	SHINKO	
SURFACE PLATE	600*600	2EA	KOREA PRECISION	
SURFACE PLATE	300*450	2EA	KOREA PRECISION	
SURFACE PLATE	600*450	2EA	KOREA PRECISION	
SURFACE PLATE	900*1200	2EA	KOREA PRECISION	
HEIGHT GAUGE	350m/m	1EA	MAHR	5/100
GAUGE PIN	0.9/10.02	1SET	MITUTOYO	1/100
HEIGHT MASTER	350m/m	1SET	MAHR	
LINEAR HEIGHT	0-1250	1SET	HERMLE(GERMANY)	1/1000
MICRO METER	0-250m/m	8EA	MAHR MITUTOYO	1/100
MICRO METER	25-50m/m	4EA	MAHR MITUTOYO	1/100
MICRO METER	50-70m/m	2EA	MAHR MITUTOYO	1/100
MICRO METER	75-100m/m	2EA	MITUTOYO	1/100
MICRO METER	100-125m/m	2EA	MITUTOYO	1/100
MICRO METER	125-150m/m	1EA	MITUTOYO	1/100
MICRO METER	150-175m/m	1EA	MITUTOYO	1/100
MICRO METER	175-200m/m	1EA	MITUTOYO	1/100
DISC MICRO/M	0-25m/m	1EA	MITUTOYO	1/100
DEPTH MICRO/M	0-25m/m	1EA	MITUTOYO	1/100
PUPPITAST	0.4	13EA	MAHR	1/100
"	0.1	4EA	MAHR	2/1000
DIAL GAUGE	10m/m	3EA	MITUTOYO	1/100
CYLINDER CALIPER (GAUGE)	15-64	3SET	MITUTOYO	1/100



6. Technologies Laboratory(1/2)

ASAN PRECISION

Research & development 研究開發

牙山精密 附設 技術研究所는 超精密 加工을 위한 最尖端 CAD/CAM/CAE System과 다년간 蓄積된 노하우를 기본으로 最適設計의 根幹을 완성함으로써 未來 金型産業 發展을 主導 하겠습니까.

The technical institute of Asan Precision Co., Ltd. have completed the foundation for the optimal design of mold using the state-of-the-art CAD/CAM/CAE system as based on the know-how which has been accumulated over the years, and will lead the future die and mold industry.



//asan21.koreasme.com



A-San Precision

6. Technologies Laboratory(2/2)



A-San Precision

7. Inner Factory(1/2)



A-San Precision

7. Inner Factory(2/2)



High Speed Process
M/C



High Speed Process
M/C



Disc Process M/C



For Electrode M/C



Die Spotting Press M/C



Discharge Process M/C

8. Product for Plastics



🔍 STORAGE BOX



🔍 TAIL GATE TRIM



🔍 RADIATOR GRILLE



🔍 UNDER COVER



🔍 Plastic mould



🔍 Plastic mould



🔍 Plastic mould



🔍 DOOR HANDLE



🔍 DOOR HANDLE



🔍 DOOR HANDLE



🔍 DOOR HANDLE



🔍 SHROUD

9.Product for Die-casting



🔍 Die casting moul...



🔍 OIL PAN



🔍 KEY SET



🔍 CYLINDER HEAD CO...



🔍 TM CASE



🔍 Die casting moul...



🔍 REAR COVER



🔍 INVERTER HOUSING

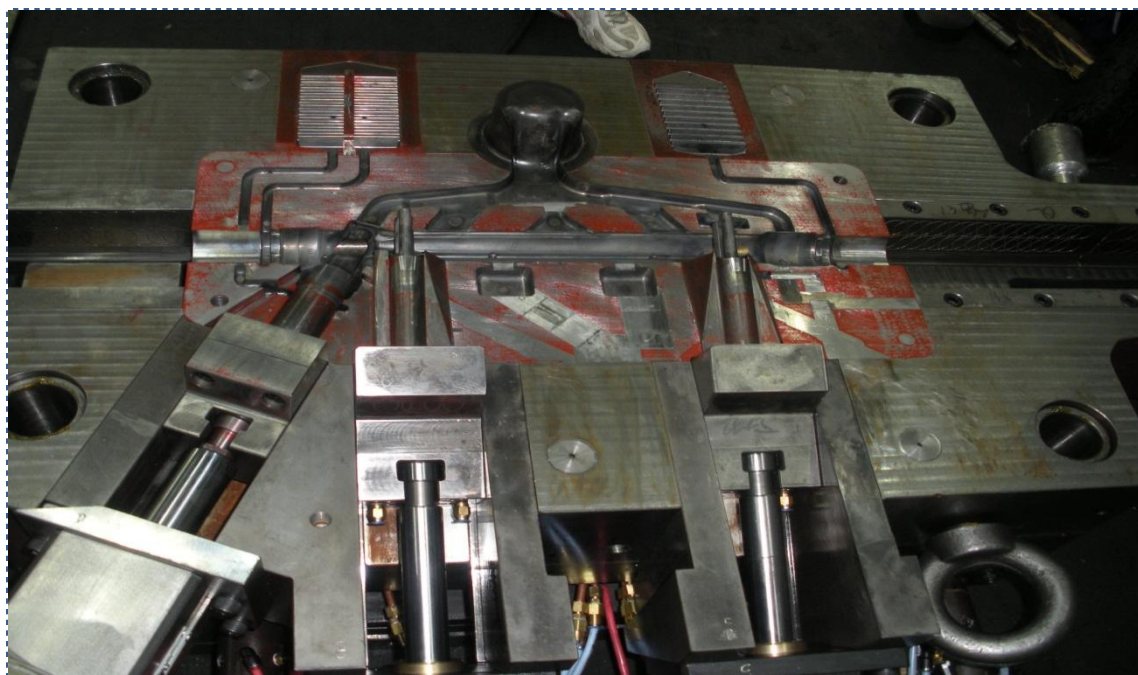
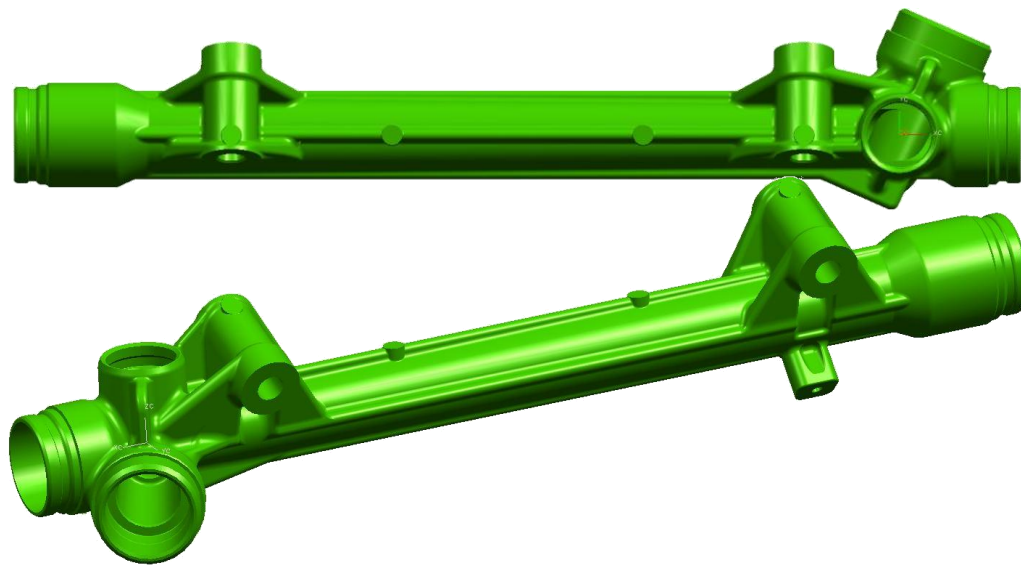


🔍 WORM HOUSING



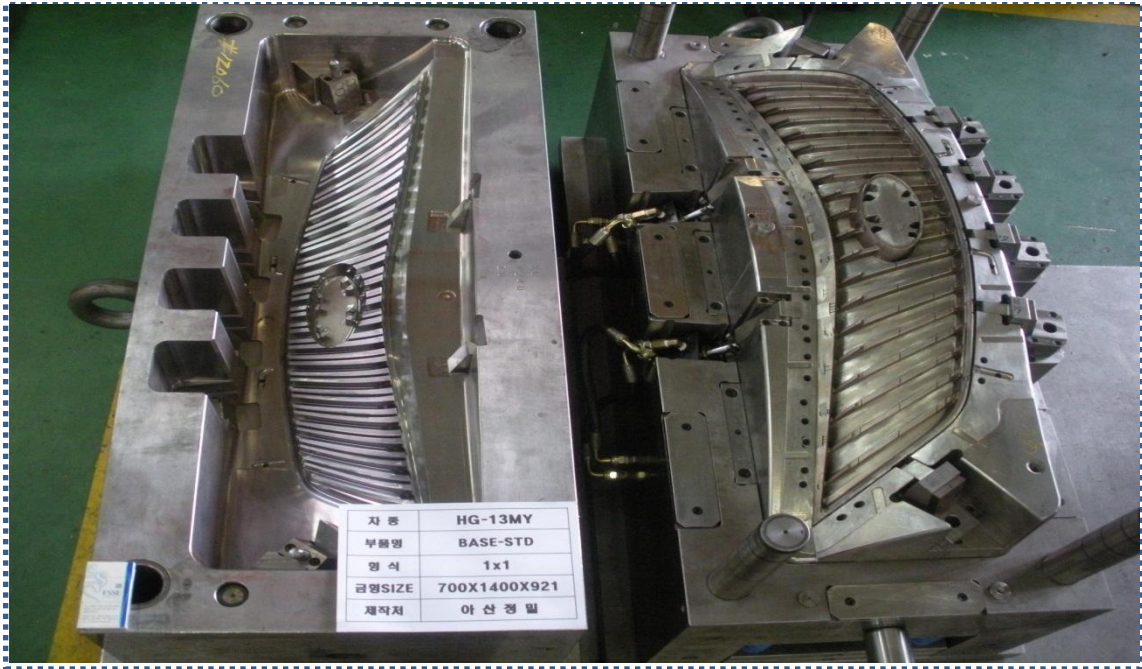
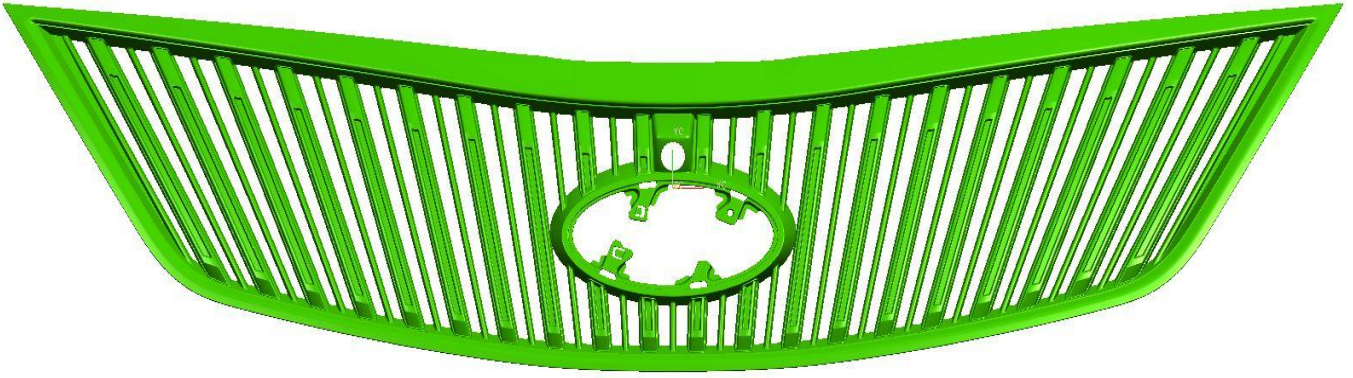
🔍 PINION HOUSING

9.Product for Die-casting



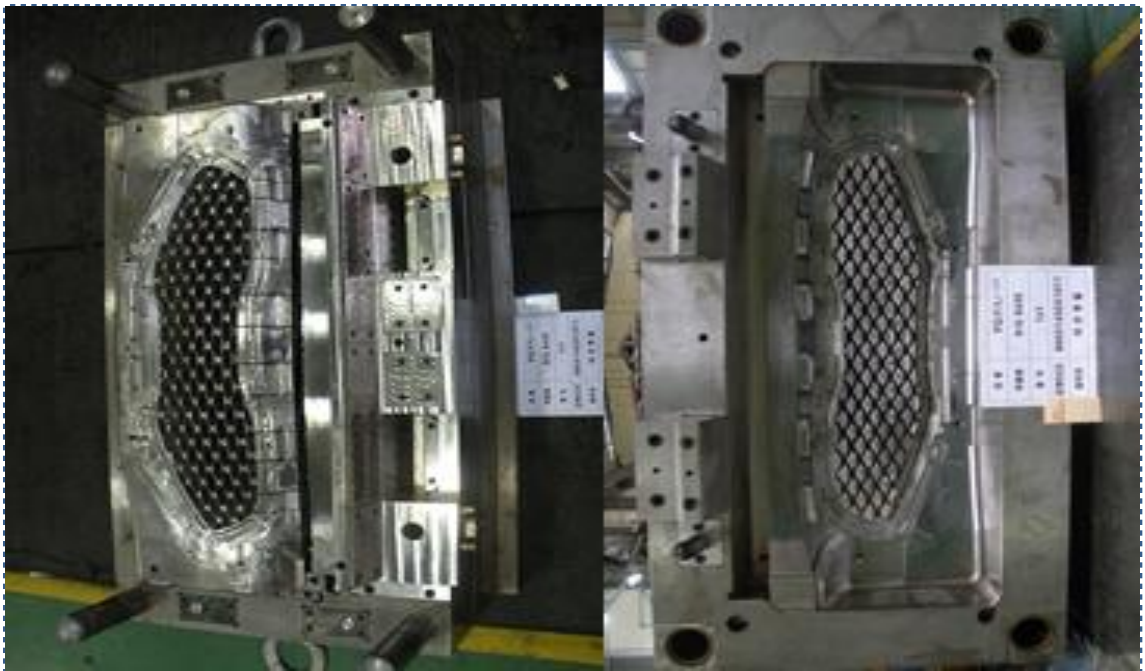
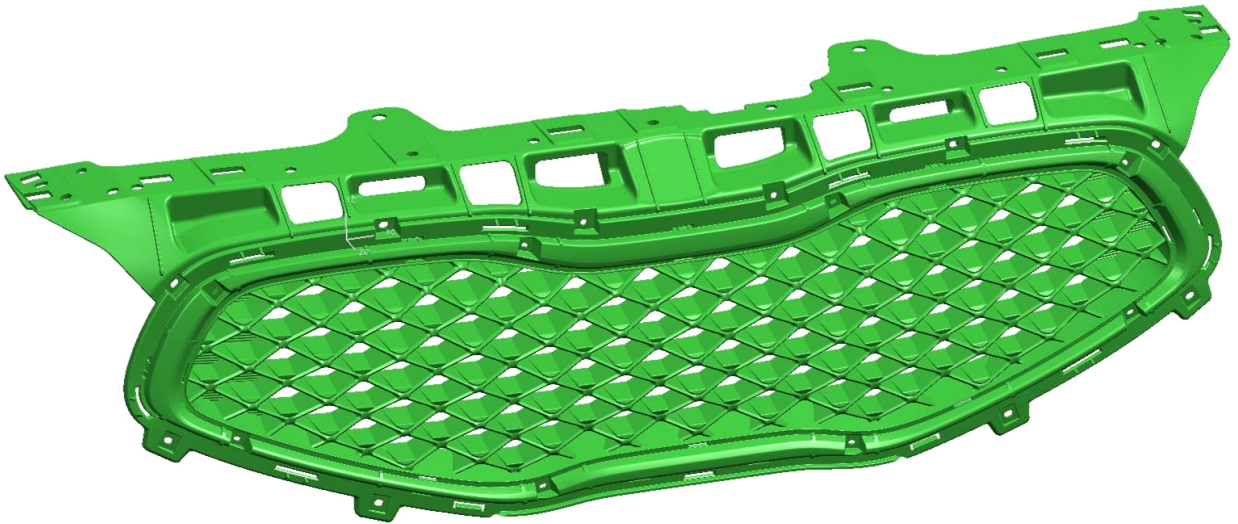
CYL' HEAD CEVER

8. Product for Plastics



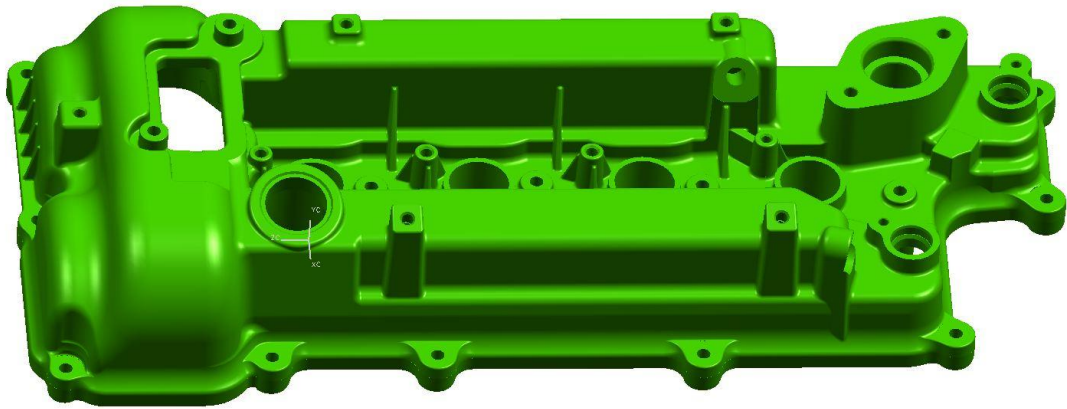
RADIATOR GRILLE

8. Product for Plastics



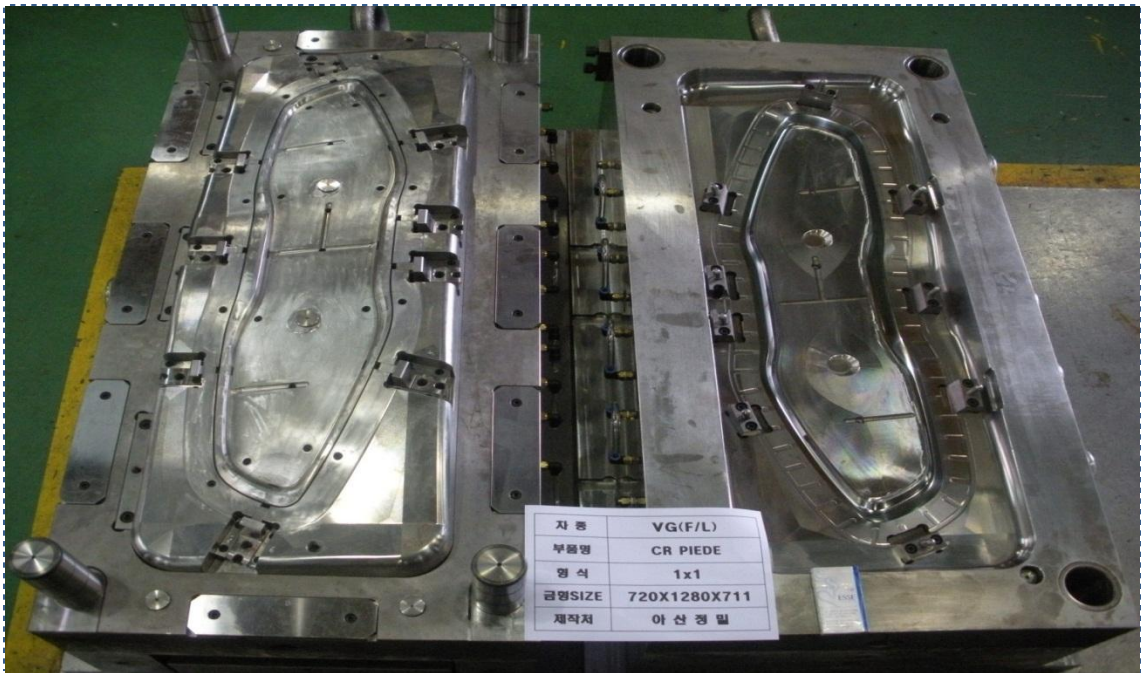
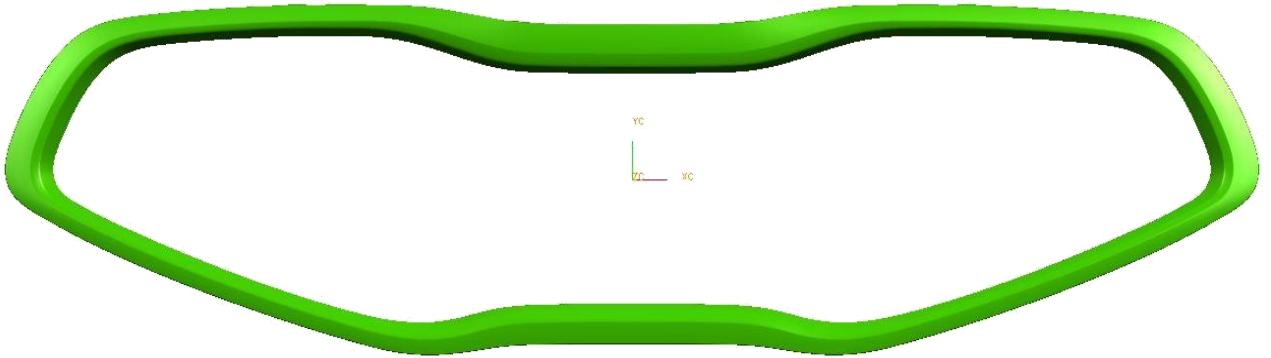
RADIATOR GRILLE

9.Product for Die-casting



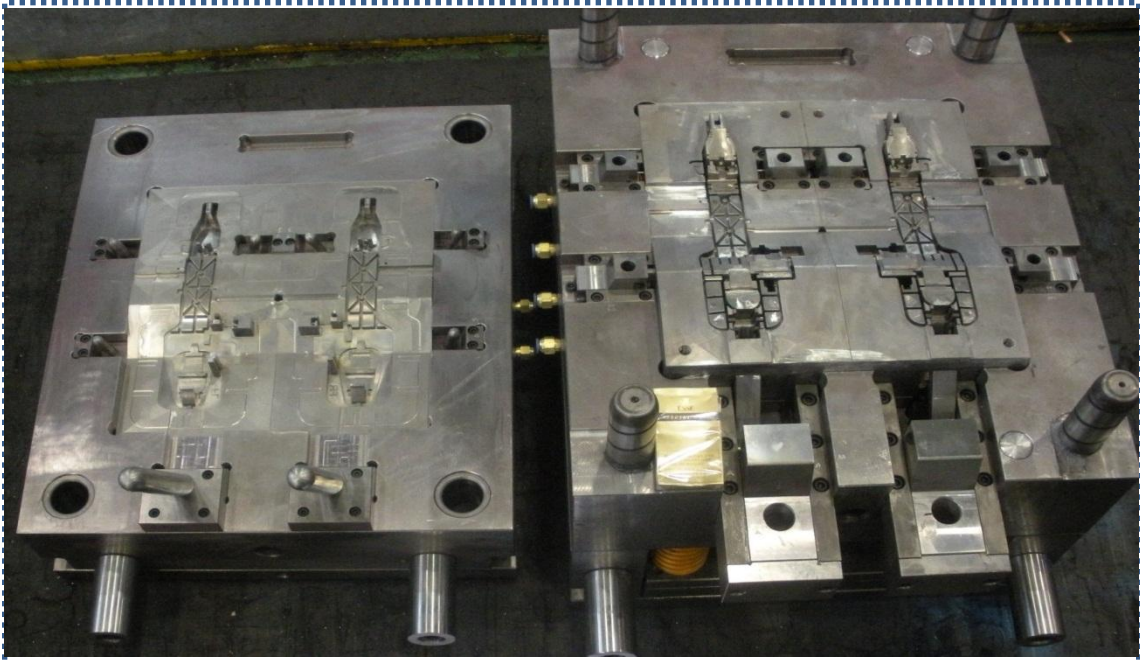
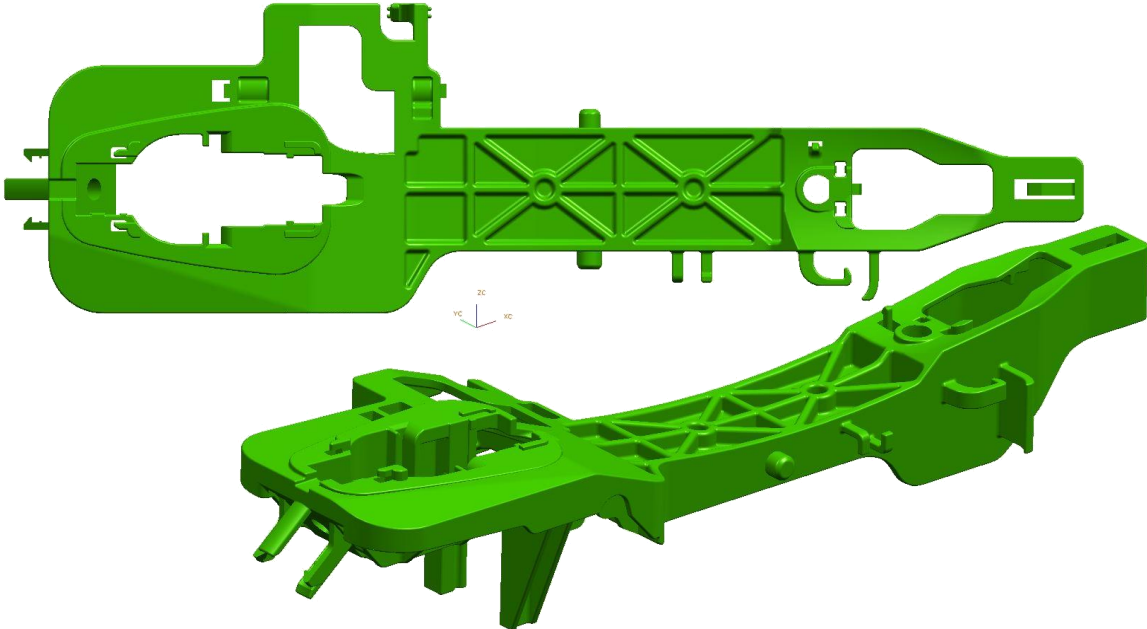
CYL' HEAD CEVER

8. Product for Plastics



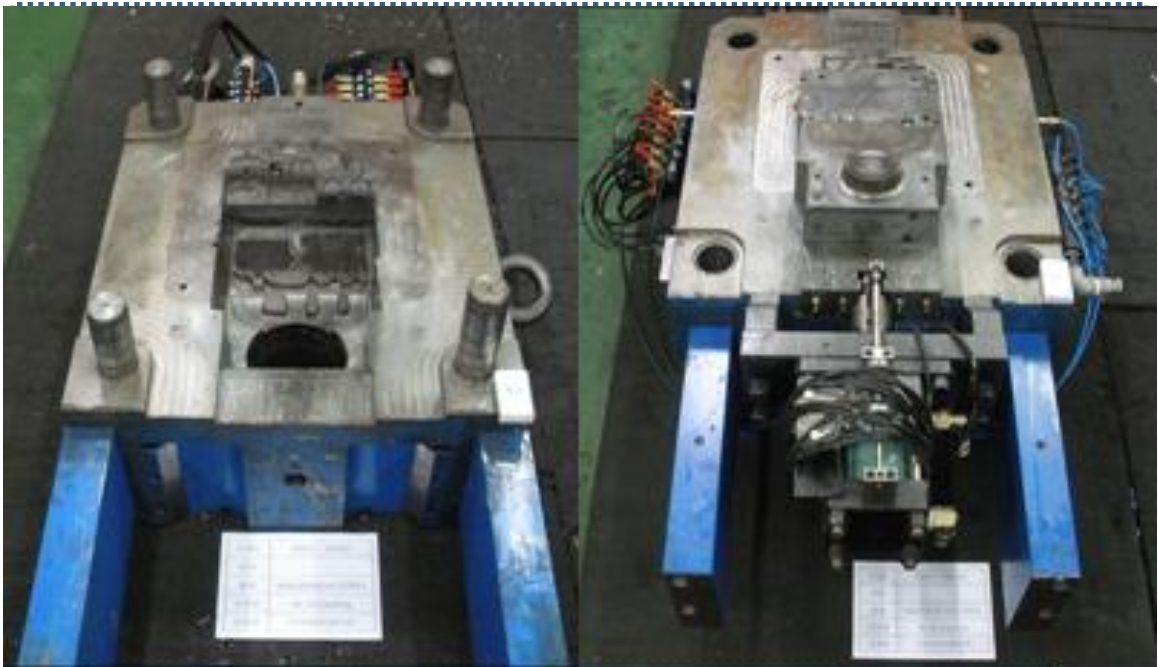
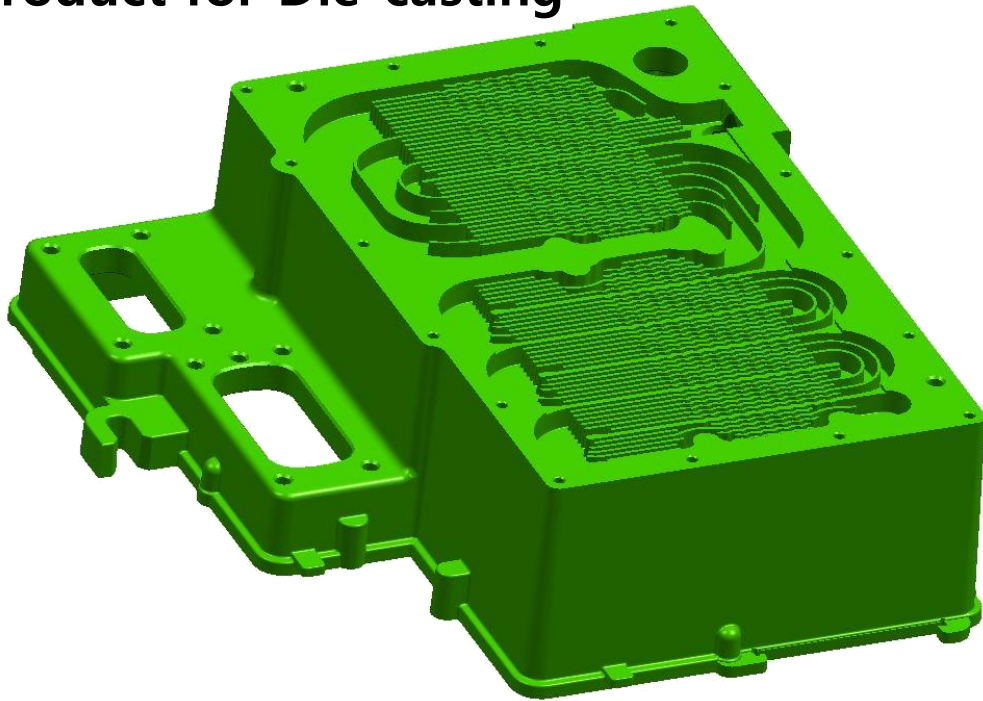
CR PIECE-RAD' GRILLE

8. Product for Plastics



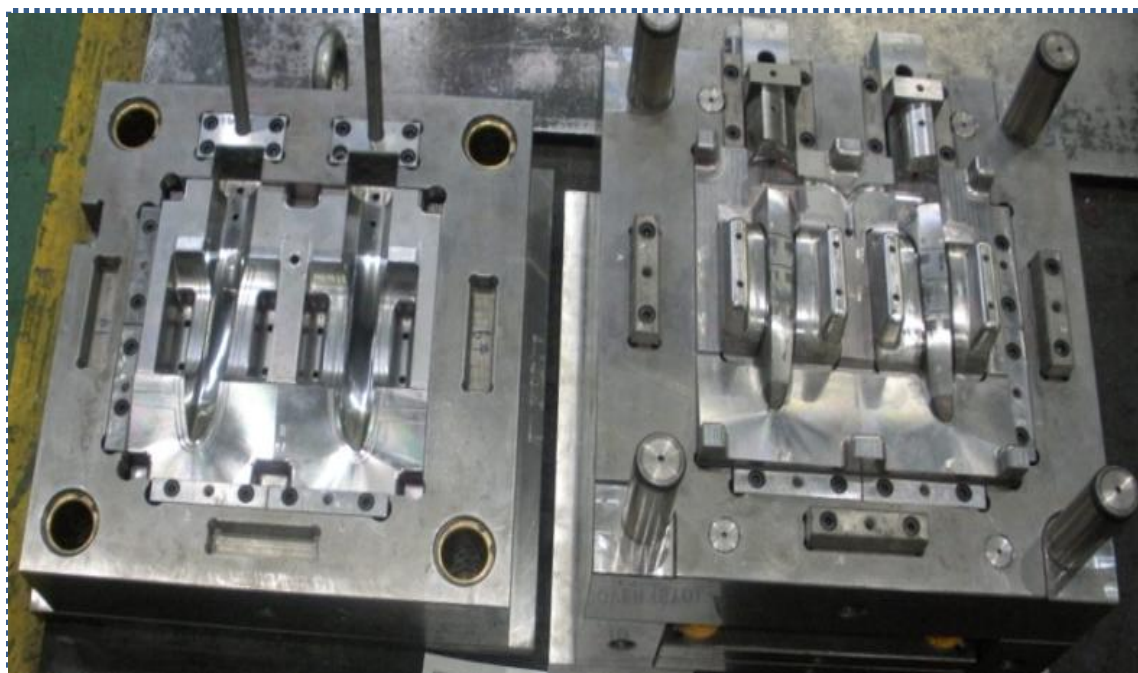
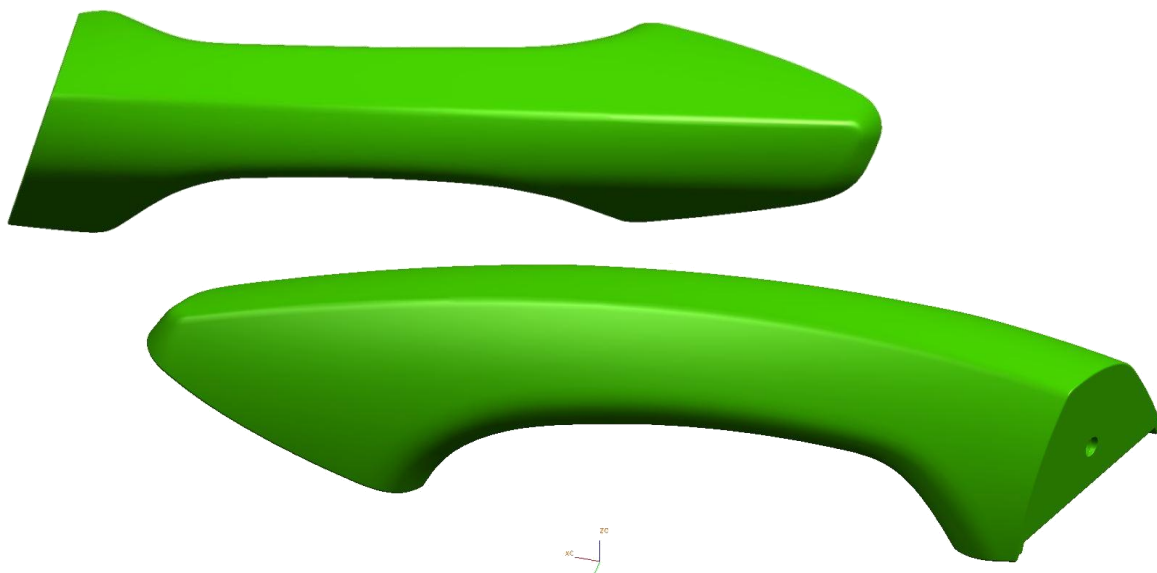
BASE-DOOR OUT SIDE HDL

9.Product for Die-casting



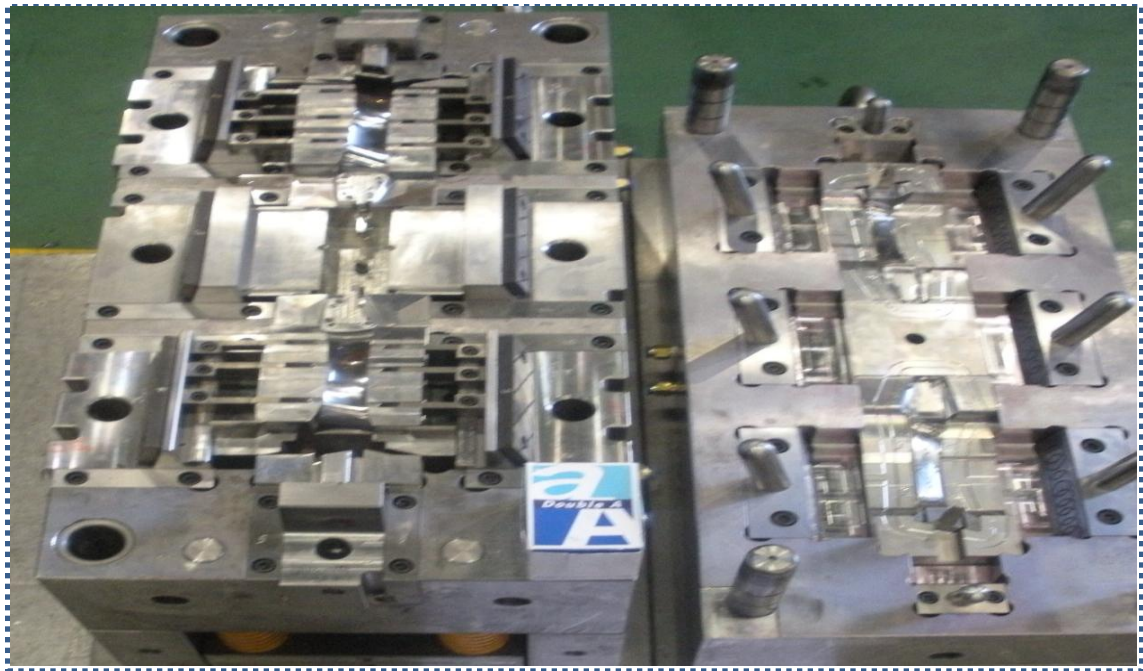
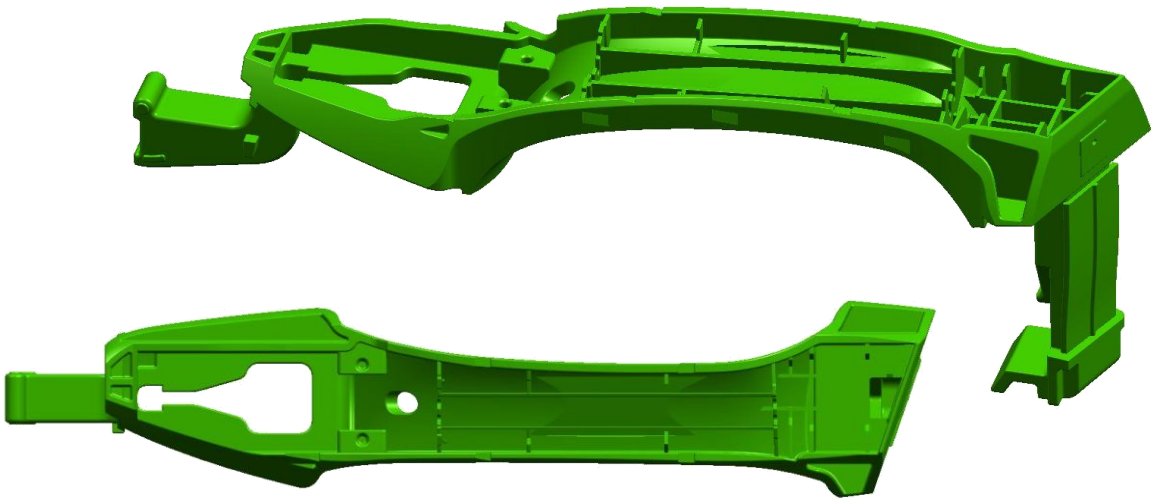
INVERTER HOUSING

8. Product for Plastics(Burrless Mold)



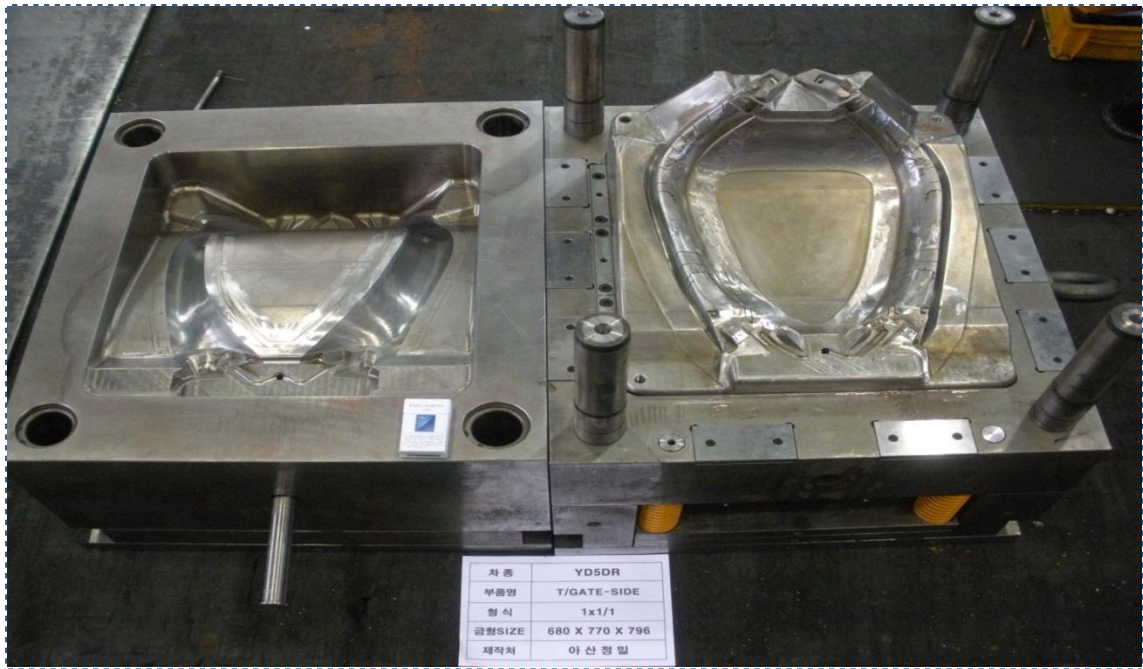
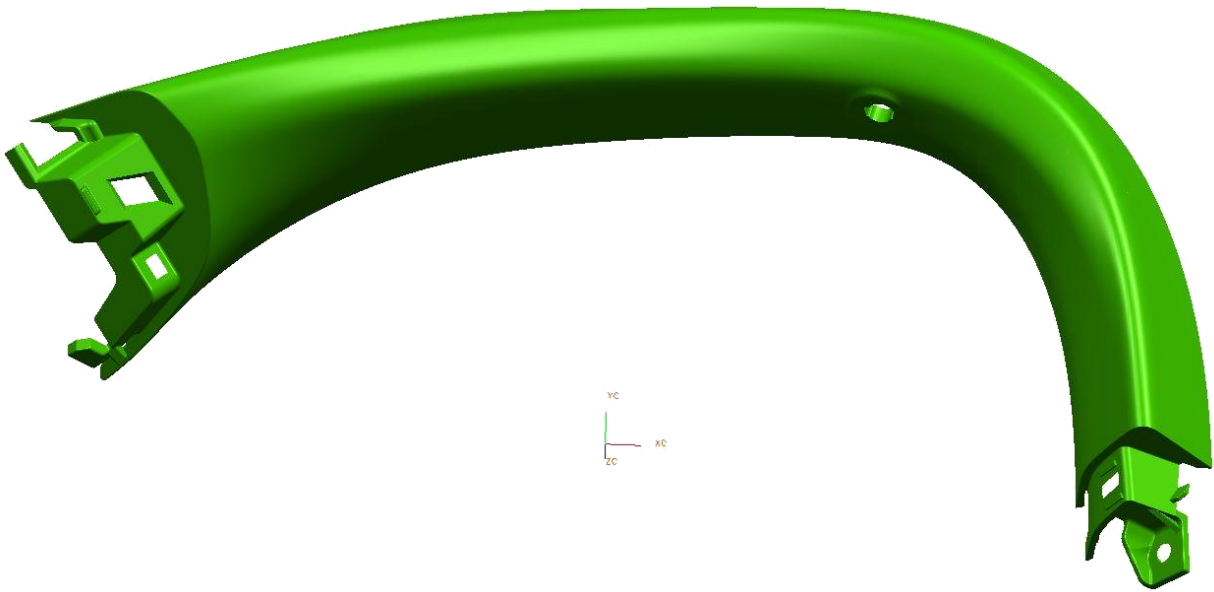
GRIP COVER-DOOR OUT SIDE HDL

8. Product for Plastics



GRIP BODY

8. Product for Plastics



차 종	YD5DR
부품명	T/GATE-SIDE
형 식	1x1/1
규격SIZE	680 X 770 X 796
제작처	아 산 경 일

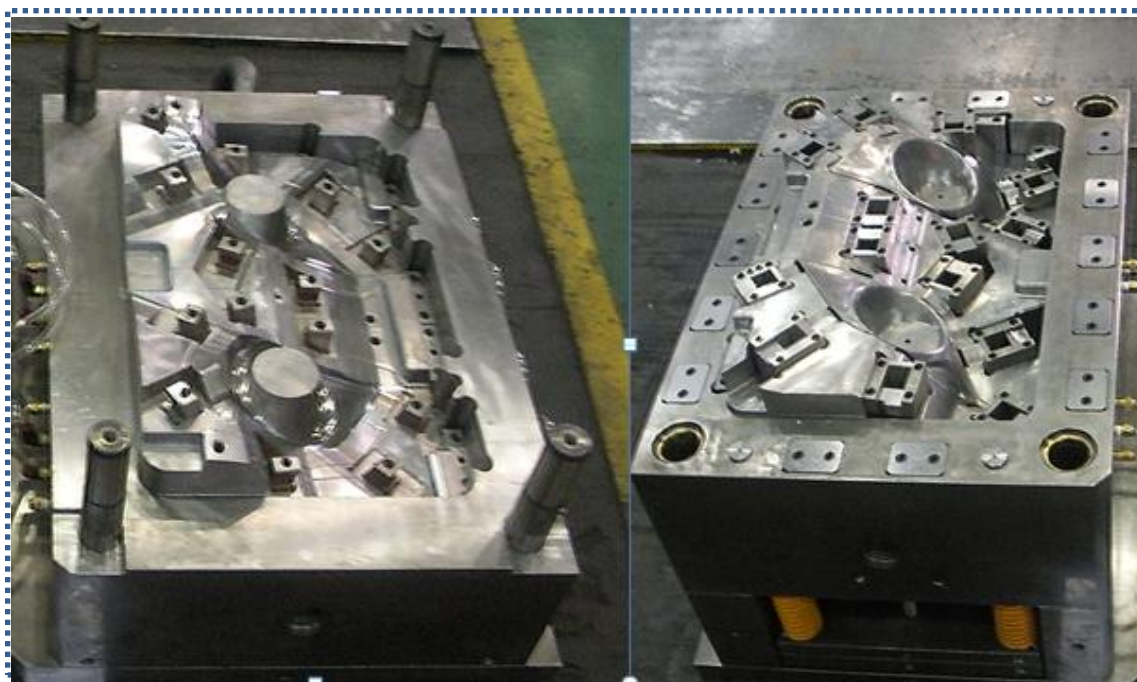
SIDE-TAIL GATE TRIM
(GAS INJECTION)

8. Product for Plastics



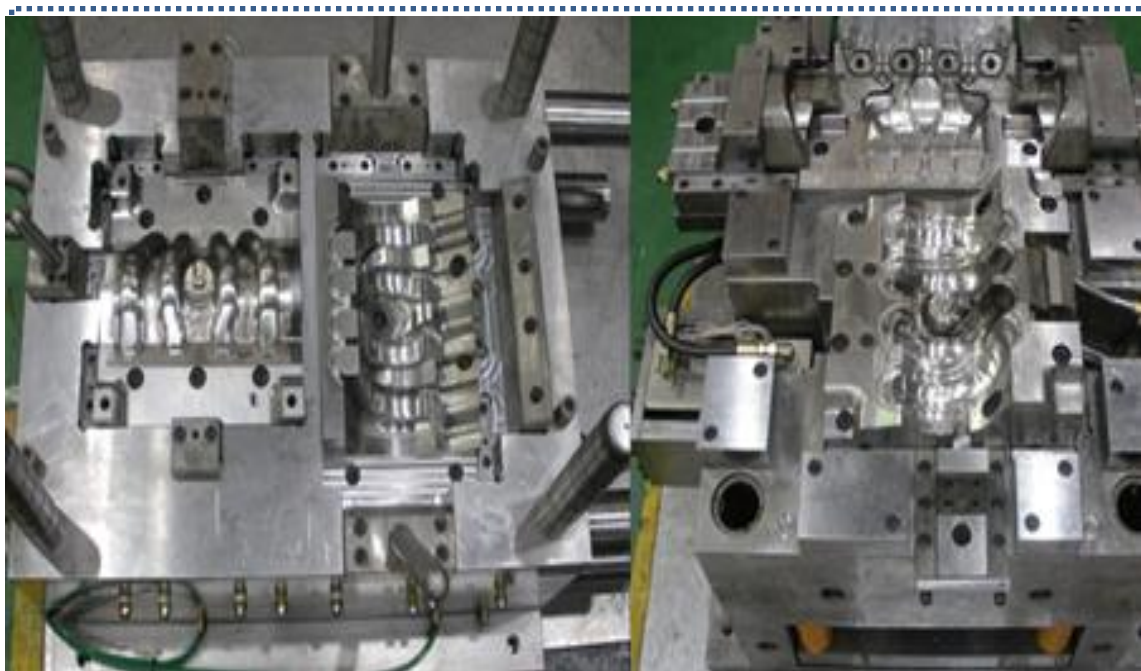
LOWER-TAIL GATE TRIM

8. Product for Plastics



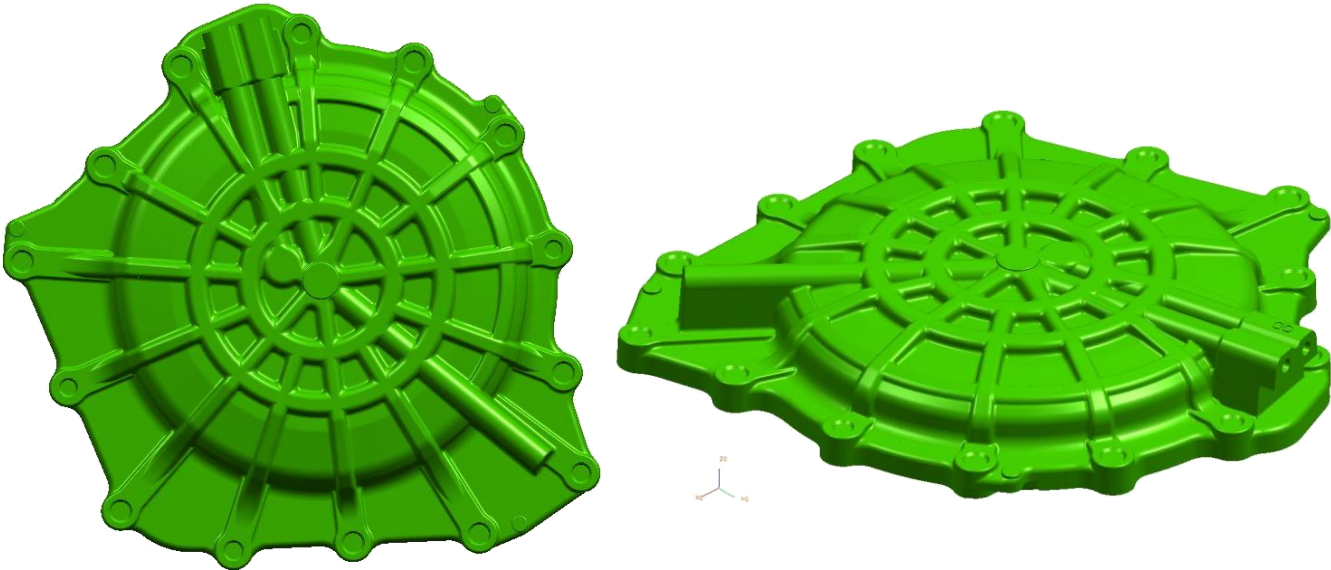
BEZEL-FOG LAMP

8. Product for Plastics



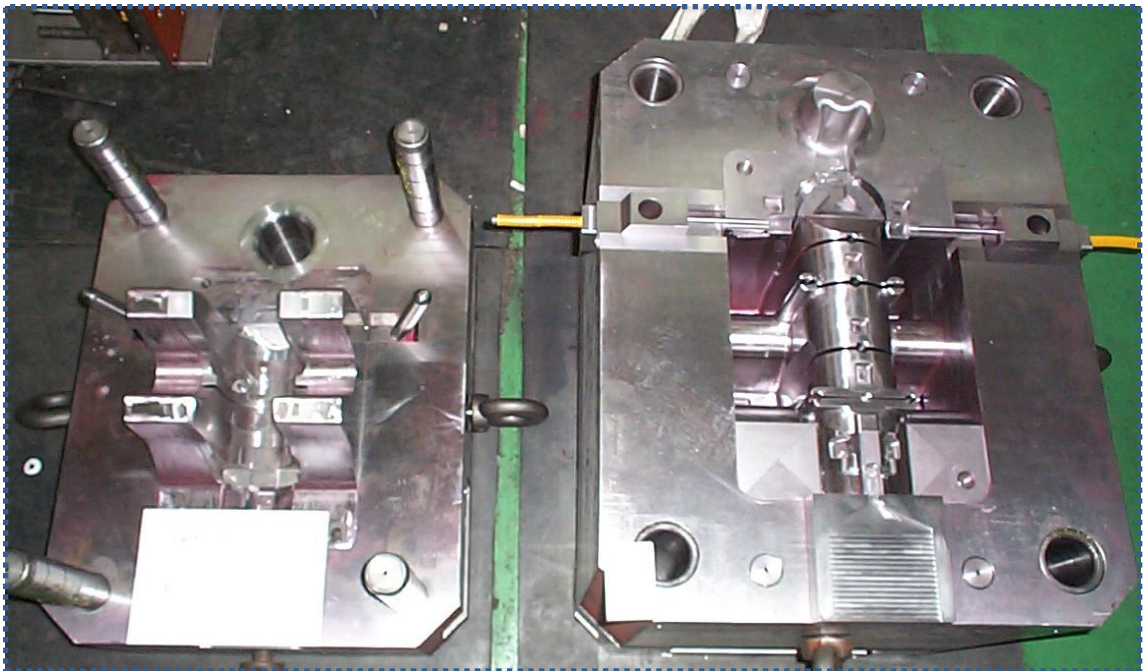
AIR INTAKE - UPEER & MIDDLE

9.Product for Die-casting



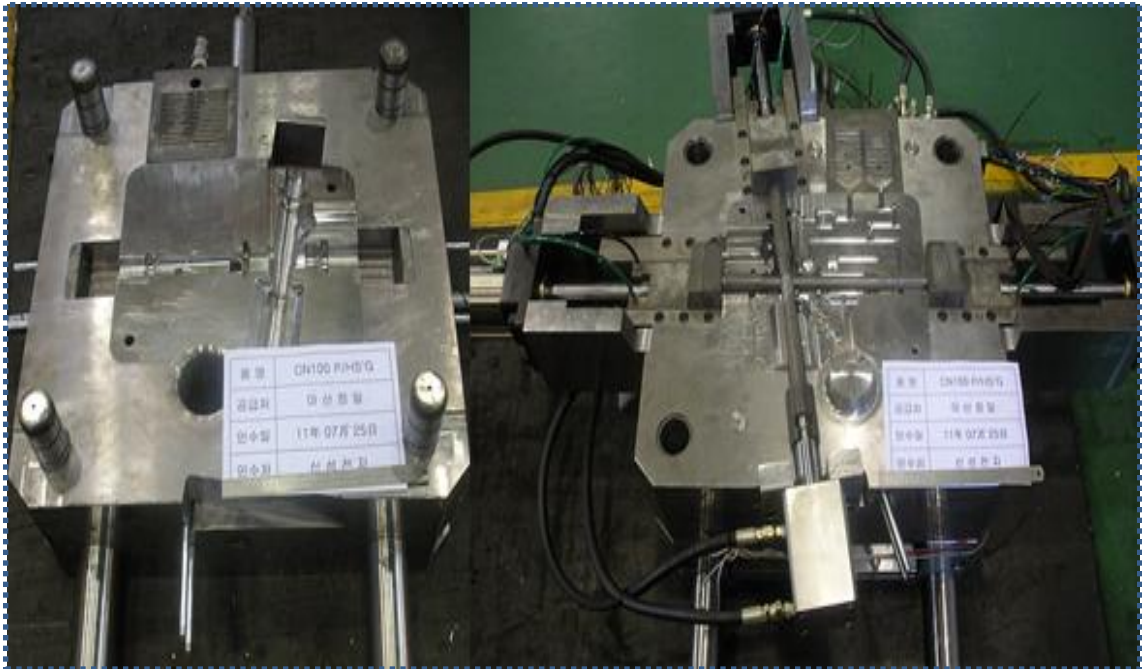
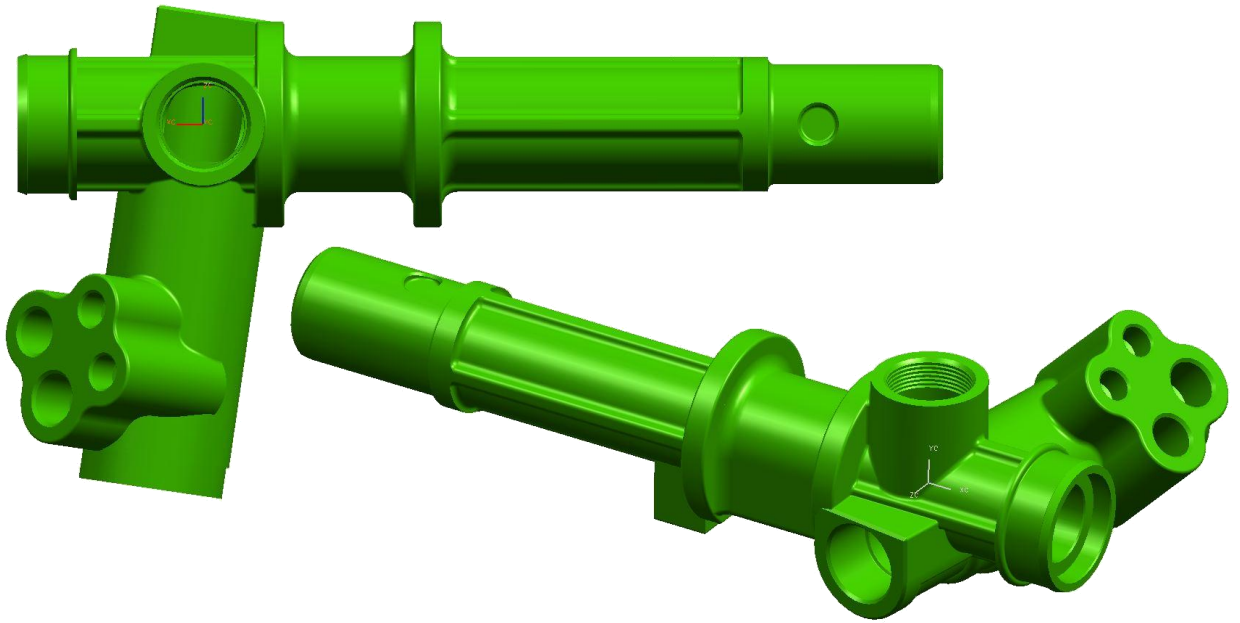
REAR COVER

9.Product for Die-casting



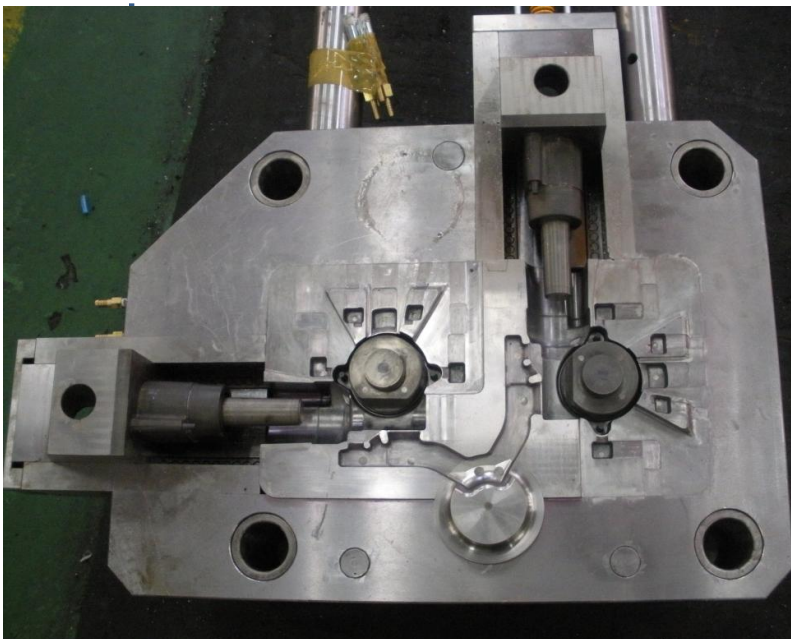
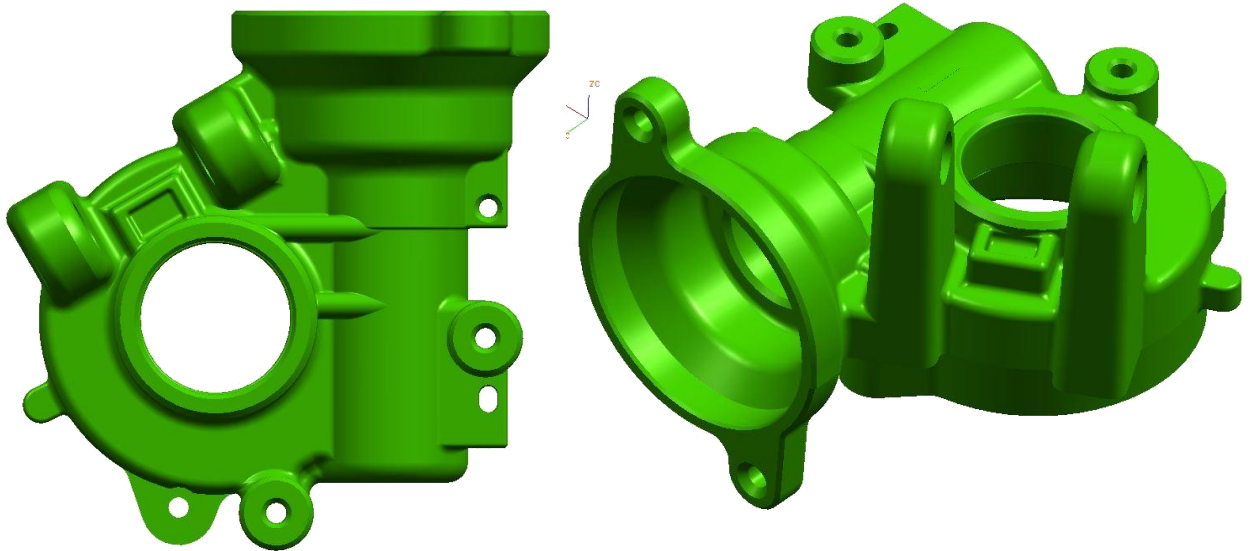
C100-BRACKET

9.Product for Die-casting



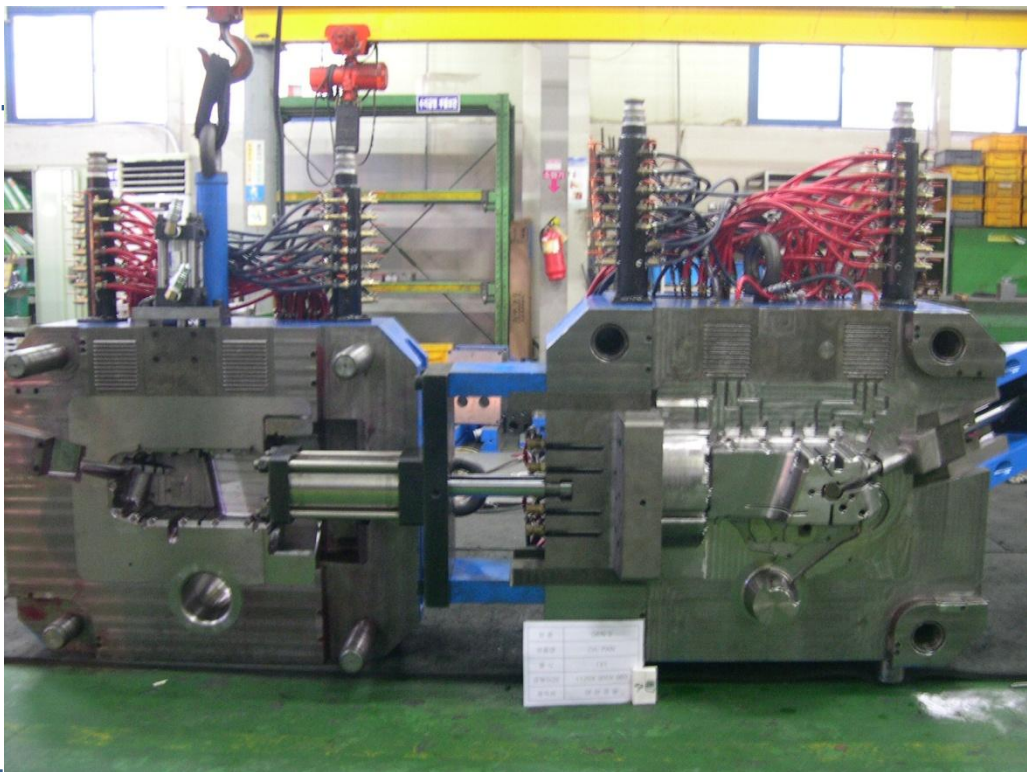
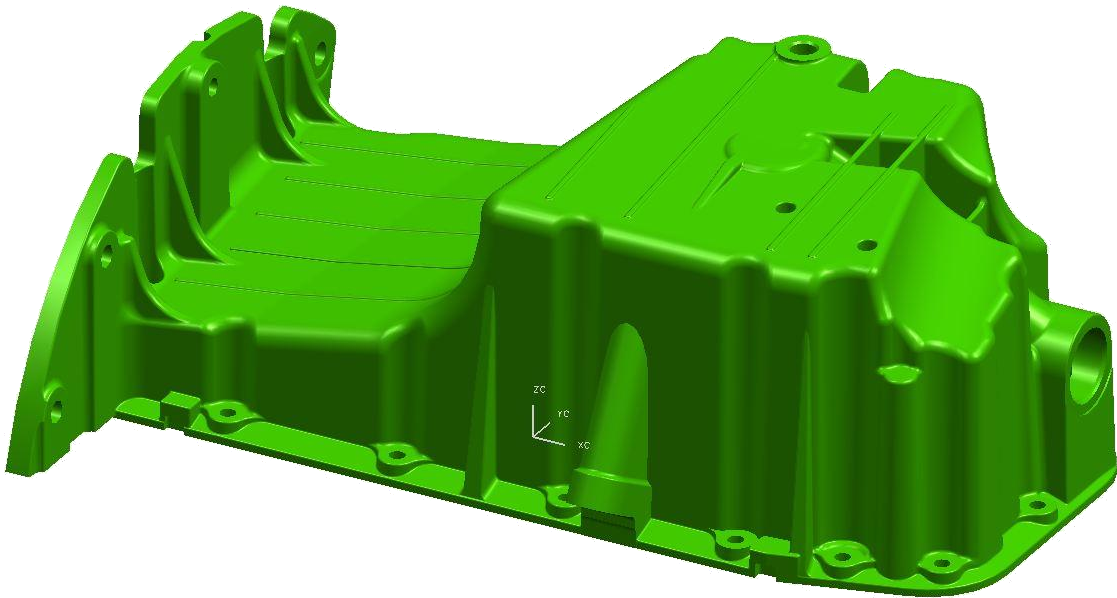
CN-100 PINION HOUSING

9.Product for Die-casting



APF- WORM HOUSING

9.Product for Die-casting



OIL PAN